

## SCX SCADA WAMAS

Serck Controls Supervisory Control And Data Acquisition WAter MAnagement System

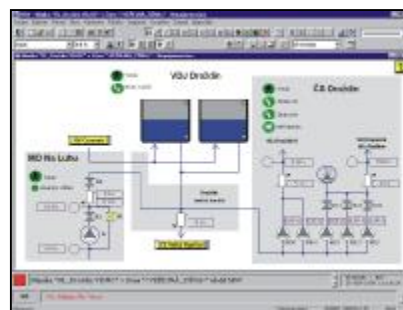
### Control systems for waterworks



**SCX SCADA WAMAS** is a computer based system for monitoring, visualisation and telemetry control of water and sewage networks, waterworks, clean and waste water treatment plants. The system consists of remote terminal units (RTU) which are installed by the technological objects and of the dispatching part. It is used for data collection and administration, visualisation, process control and plant management. The components of the SCADA system communicate via LAN/WAN networks, radio data network, phone or GSM modems.

#### Features

- § Windows NT/2000/XP based
- § Open systems architecture
- § Client/Server Architecture of SCX SCADA System
- § Real time system
- § Programmable and configurable by end-user
- § Password controlled access
- § Pan and zoom rolling map
- § Alarm and event management
- § Trends and graphs
- § Operator historical data
- § Object oriented architecture
- § ODBC (Open Data Base Connection) data exchange
- § Intranet interface



VAE CONTROLS OSTRAVA

CONTROL SYSTEMS AND TECHNOLOGY FOR WATER AND PETROCHEMICAL INDUSTRY AND FOR POWER PLANTS

### Typical applications in water industry

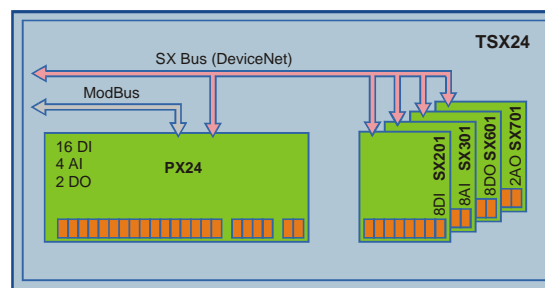
- § Telemetry monitoring and control of water networks
- § Telemetry monitoring of sewage networks
- § Clean and waste water treatment plants control
  - § chemical process control
  - § mechanical process control (filters)
  - § pumping control
- § Water quality monitoring
- § Pressure control
- § Electricity spares
- § Water loss and drops elimination
- § Consumption material, service and investment management



### Remote terminal units

RTUs are programmable controllers special equipped for remote operation by extended memory, low power consumption, special communication interface etc. RTUs can be (re)programmed from the dispatching by standard communication link without need for system restart.

Proteus PX/SX - new type of intelligent RTUs with modular conception. I/O expansion modules are connected with the processor module through DeviceNet interface.



SCX SCADA WAMAS is compatible with any other equipment with standard communication interface, e.g. PLC controllers, which are suitable for local control of large technological plants with quick communication (e.g. sewage work with optical networks)

### VAE CONTROLS

VAE CONTROLS is focused at engineering, control systems and technology for water and petrochemical industry and for power plants. All scope of services from feasibility study and design to delivery, plant start-up and after-sale service is available.

The company was established in 1993 and has 80 employees at the time. Most of the staff is university educated and speaks at least one foreign language. We are active on the Czech, English, Netherlands, Slovak, Polish, Bulgarian, Serbian, Lithuanian and Russian markets. VAE CONTROLS obtained **ISO 9001 Quality Certificate** for the whole scope of activities: *"Projects design, delivery and servicing heavy-current equipment, equipment for operating systems, technological units, the creation and application of software products."*



### References

**Water networks:** Žďár nad Sázavou, Břeclav, Boskovice, Hodonín, Prostějov, Hustopeče, Mikulov, Kladno-Mělník, Mladá Boleslav, Kroměříž, Uherské Hradiště, Přerov, Moravská Třebová, Říčany u Prahy, Ostrava, Sofia, Hranice, Bourgas, České Budějovice, Belgrade

**Treatment and sewage plants:** Klíčava, Rečkov, Troubky, Hrdibořice, Černovír, Nová Ves Dubí, Plešovec, Znojmo